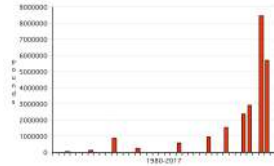
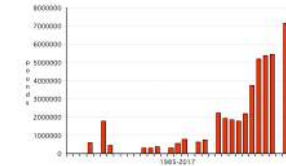


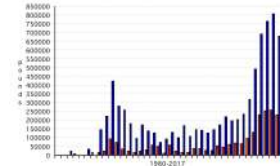
Page 2: Jaguar



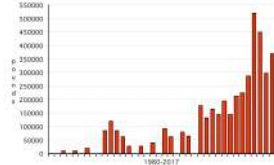
Page 88: Ferrari



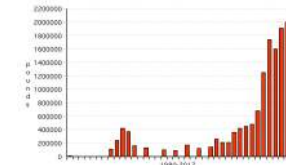
Page 112: Ferrari - Maserati



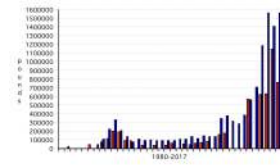
Page 43: Lamborghini



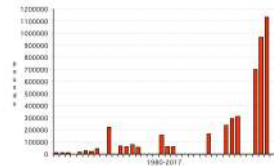
Page 89: Ferrari



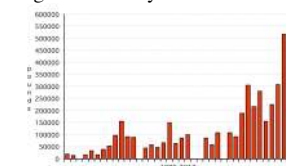
Page 113: Maserati - Ferrari



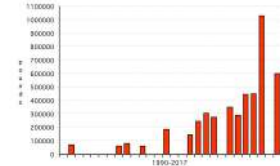
Page 45: Aston Martin



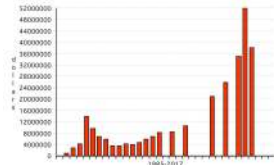
Page 89: Bentley



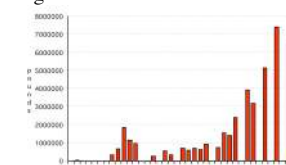
Page 115: Bizzarrini



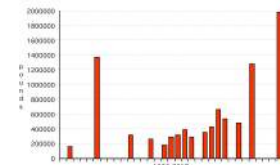
Page 54: Ferrari



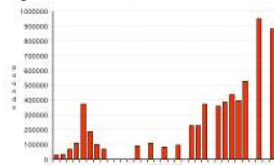
Page 100: Ferrari



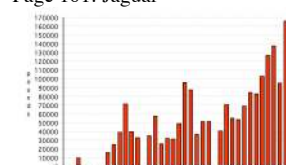
Page 119: Bugatti



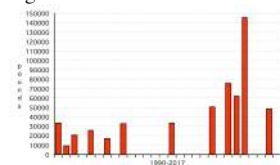
Page 78: Ferrari



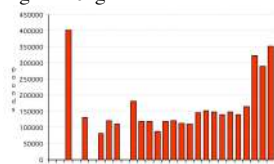
Page 101: Jaguar



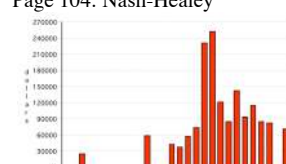
Page 120: Fiat



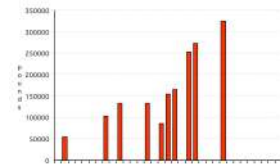
Page 82: Jaguar



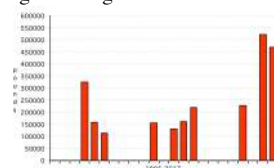
Page 104: Nash-Healey



Page 121: OSCA



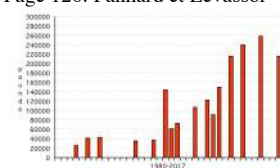
Page 83: Bugatti



Page 106: Fiat Fiat - Zagato



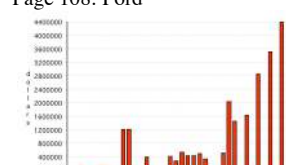
Page 126: Panhard et Levasor



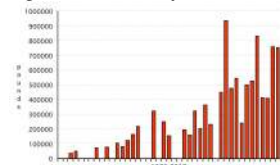
Page 84: Jaguar



Page 108: Ford



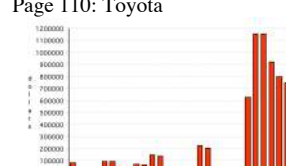
Page 129: Rolls-Royce



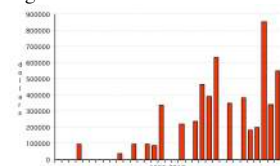
Page 86: Aston Martin



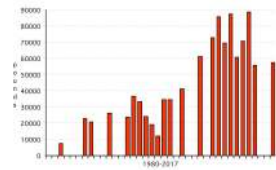
Page 110: Toyota



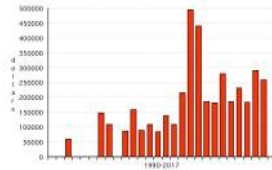
Page 130: Pierce-Arrow



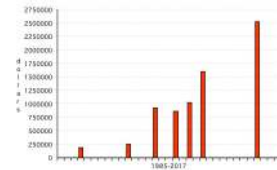
Page 132: De Dion-Bouton



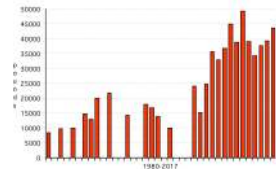
Page 147: Cadillac



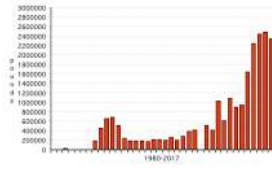
Page 173: Mercer



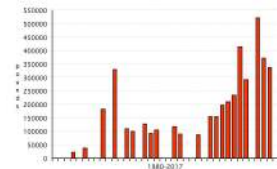
Page 132: Oldsmobile



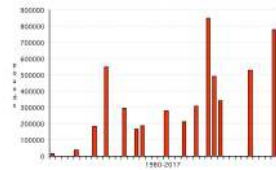
Page 150: Ferrari



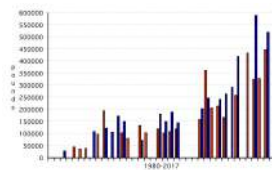
Page 174: Jaguar



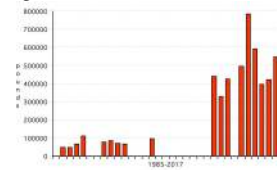
Page 135: Bentley



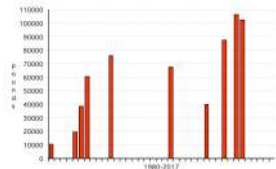
Page 164: Bugatti Ventoux - Stelvio



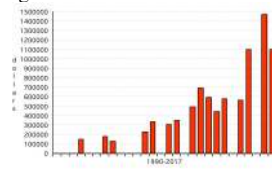
Page 175: BMW



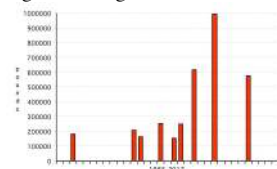
Page 136: Alfa Romeo



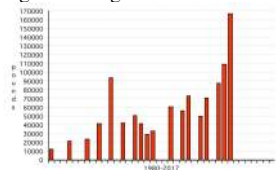
Page 166: Cadillac



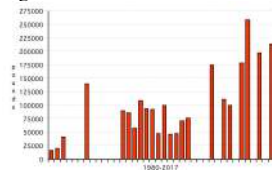
Page 176: Bugatti



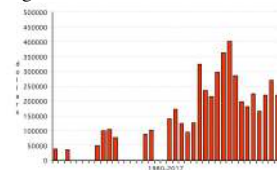
Page 137: Lagonda



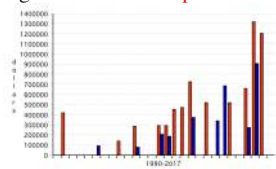
Page 167: Vauxhall



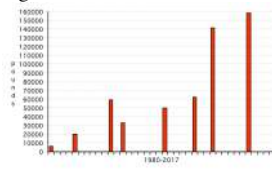
Page 177: Cord



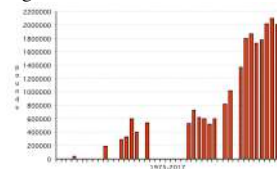
Page 140: Marmon Open - Closed



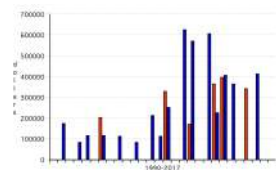
Page 168: Sunbeam



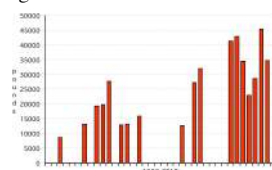
Page 179: Mercedes-Benz



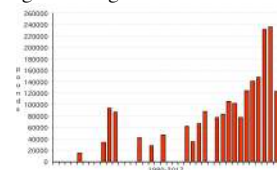
Page 142: Chrysler Roadster - Phaeton



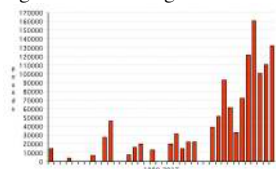
Page 169: Amilcar



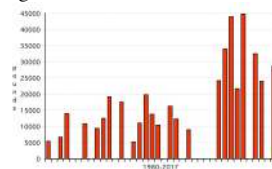
Page 180: Jaguar



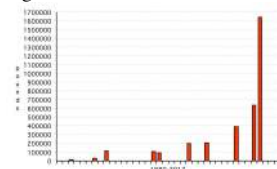
Page 144: Facel Vega



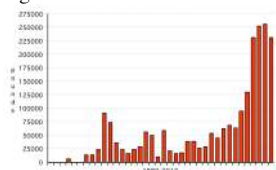
Page 170: MG



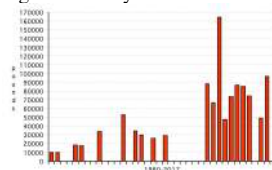
Page 180: Ferrari



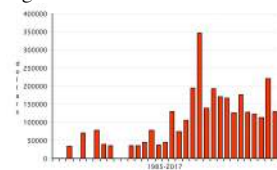
Page 146: Maserati



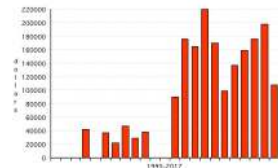
Page 171: Riley



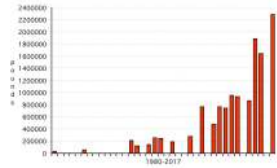
Page 181: Chevrolet



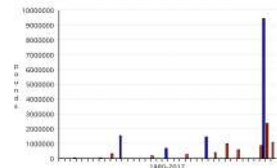
Page 182: Kaiser-Darrin



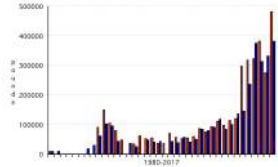
Page 203: Alfa Romeo



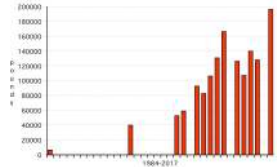
Page 249: Aston Martin Spider - Coupe



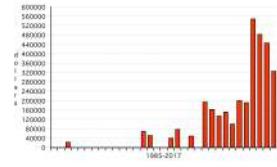
Page 183: Dino GTS - GT



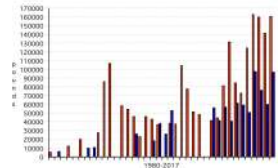
Page 207: Citroën



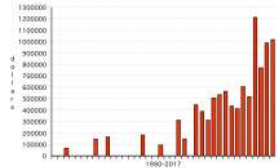
Page 251: Arnolt-Bristol



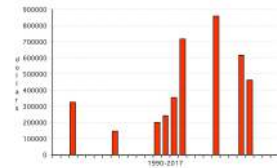
Page 183: Jaguar DHC - FHC



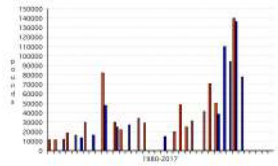
Page 227: Auburn



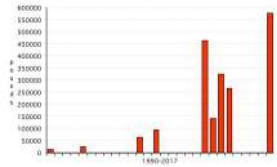
Page 253: Chrysler



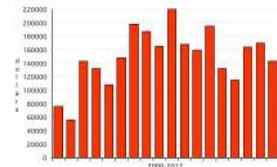
Page 184: AC Roadster - Coupe



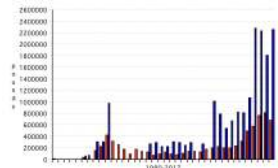
Page 236: Peugeot



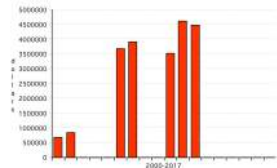
Page 254: Chrysler



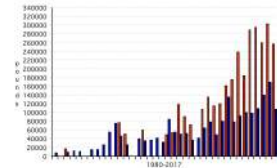
Page 185: Ferrari Coupe - Spider



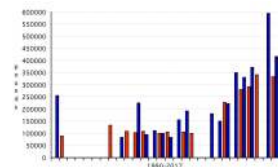
Page 238: Talbot-Lago



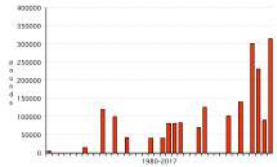
Page 256: Jaguar Alloy - Steel



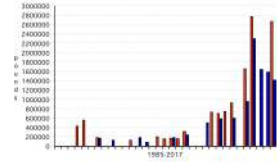
Page 186: Mercedes-Benz Cabriolet - Roadster



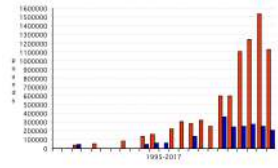
Page 241: Delahaye



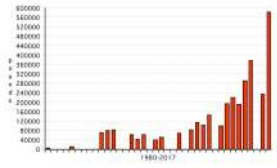
Page 257: Ferrari Alloy - Steel



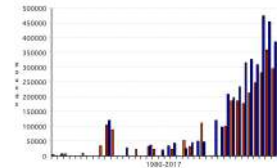
Page 188: Lancia Spider - Conver



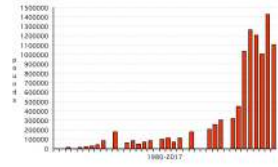
Page 242: Bentley



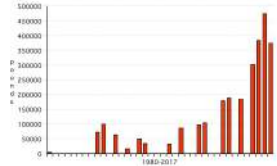
Page 296: Aston Martin Vantage



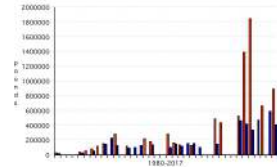
Page 192: Bentley



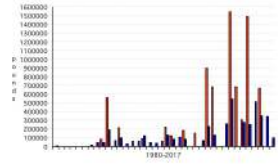
Page 246: Alfa Romeo



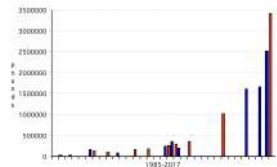
Page 330: Bentley Orig.- Replica



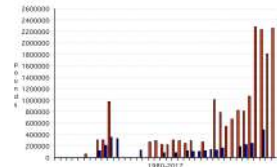
Page 199: Delahaye Figoni - Other



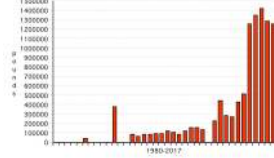
Page 247: Maserati Coupe - Spider



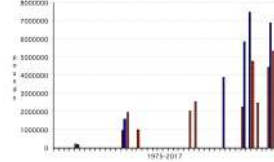
Page 332: Ferrari Orig- Replica



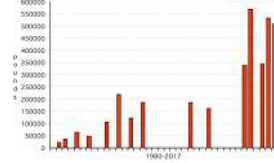
Page 334: Ferrari



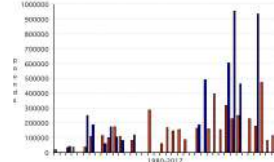
Page 344: Mercedes-Benz Short Tail - Long Tail



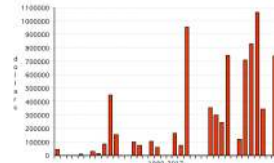
Page 347: Horch



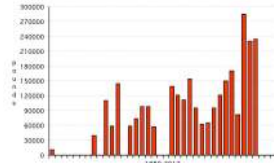
Page 349: Hispano-Suiza H6 - J12



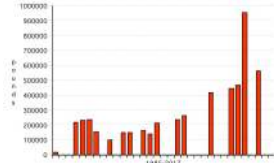
Page 351: Isotta-Fraschini



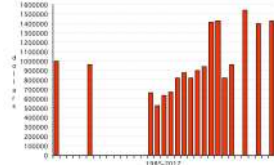
Page 352: Rolls-Royce



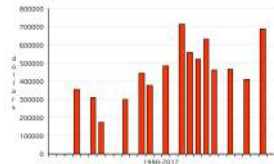
Page 354: Invicta



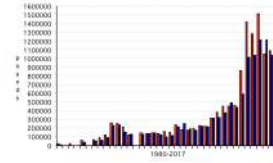
Page 356: Duesenberg



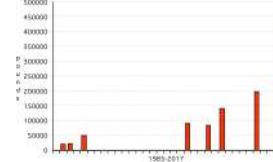
Page 358: Cadillac



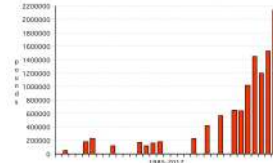
Page 359: Mercedes-Benz Gullwing - Roadster



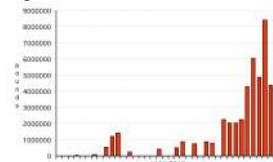
Page 361: BMW



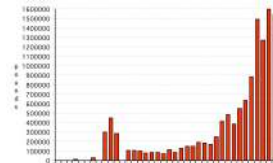
Page 362: BMW



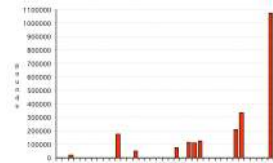
Page 364: Ferrari



Page 365: Ferrari



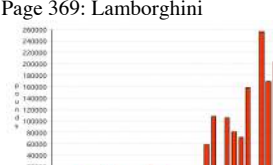
Page 367: Maserati



Page 368: Lamborghini P400 - S



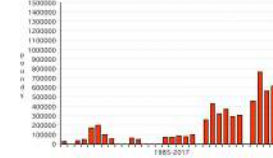
Page 369: Lamborghini



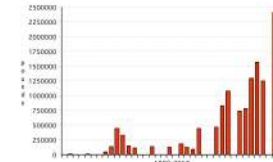
Page 370: Aston Martin



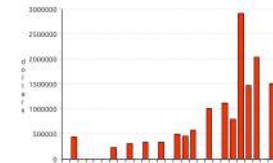
Page 371: Aston Martin



Page 372: Aston Martin



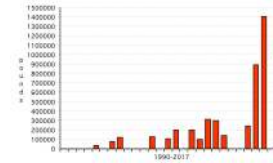
Page 375: Tucker



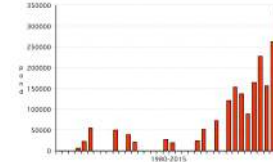
Page 376: Dual-Ghia



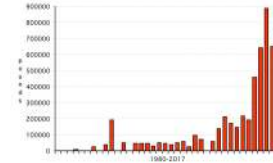
Page 382: Talbot-Lago



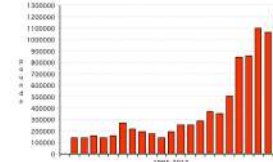
Page 383: Iso Grifo



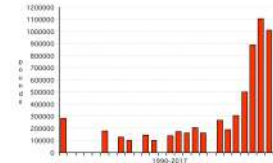
Page 384: Maserati



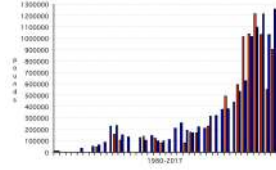
Page 385: Ferrari



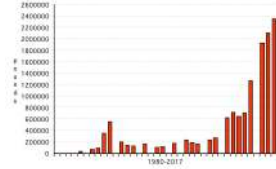
Page 386: Porsche



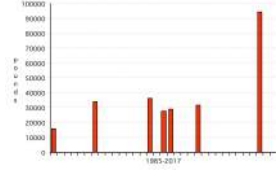
Page 400: Mercedes-Benz
Original- Restored



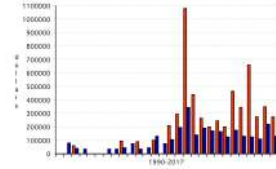
Page 403: Ferrari



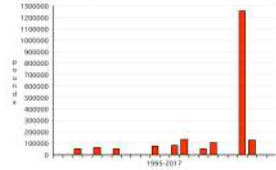
Page 406: Delahaye



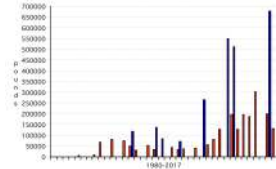
Page 416: Chevrolet 1953 –
1954/1955



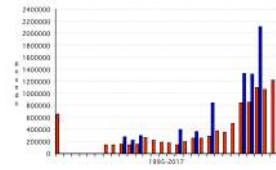
Page 430: OM



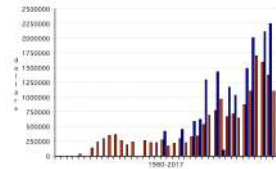
Page 431: Aston Martin Works



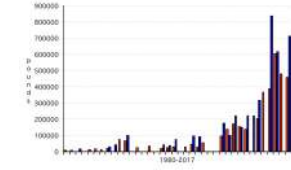
Page 432: Ferrari LM



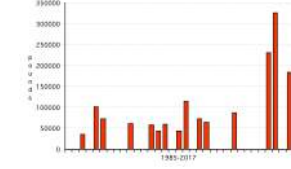
Page 433: Shelby SC



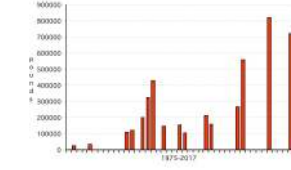
Page 436: Porsche Lightweight



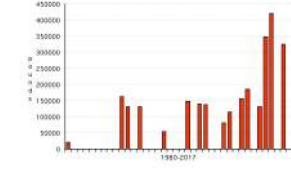
Page 438: Frazer-Nash



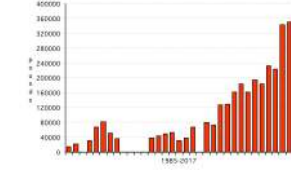
Page 454: Mercedes-Benz



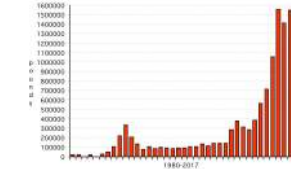
Page 455: Lagonda



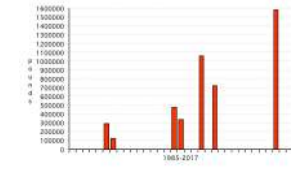
Page 456: AC



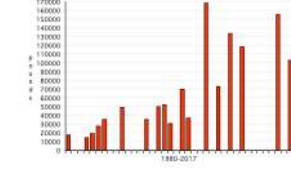
Page 457: Ferrari



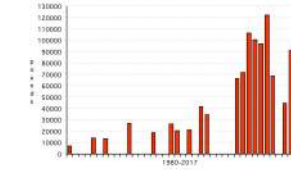
Page 459: Bugatti



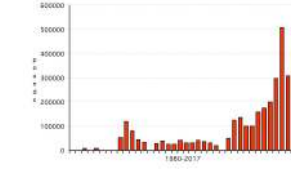
Page 460: Benz



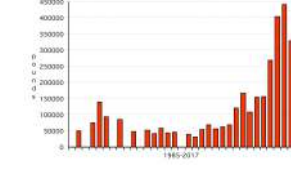
Page 461: De Dion-Bouton



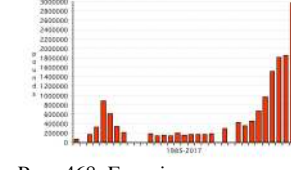
Page 462: Ferrari



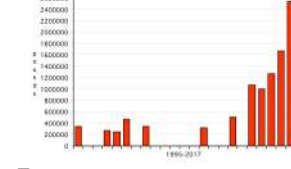
Page 464: BMW



Page 466: Ferrari



Page 468: Ferrari



Extra: